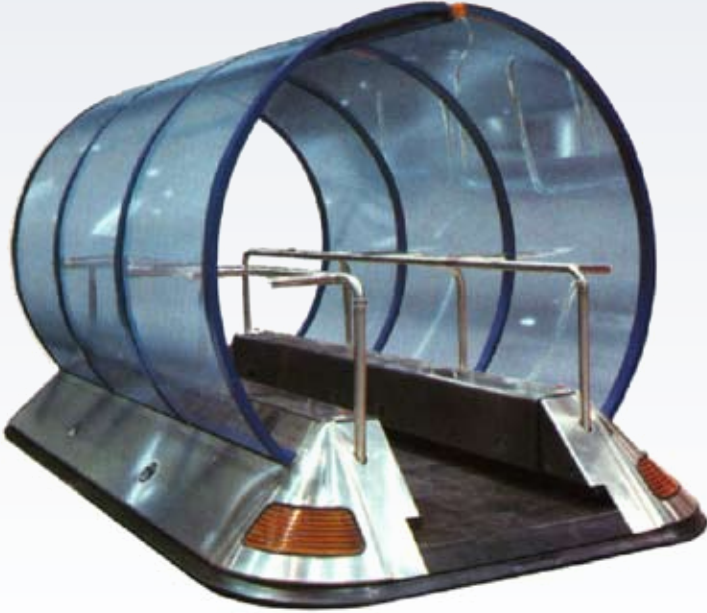


Custom C500 People Mover



These automated passenger transporters are excellent for tour guides and for transporting passengers along designated routes for safe and reliable transportation. The Custom C500 transports people under a transparent cover that provides passenger protection with the added benefit of visibility.

Two bidirectional drive wheels, for differential type steering, and four swivel casters allow for a great deal of flexibility in movement and speed. The dual frame suspension keeps the drive wheels in contact with the floor at all times. All wheels feature extra thick polyurethane tread for long life and quiet operation. Electromechanical brakes are included as an integral part of the permanent magnet motor and sealed gearbox assembly. Each Custom C500 is equipped with a 48-volt battery power source. Vehicle object detection sensors reduce vehicle speed and stops vehicle travel when an obstruction is in the travel path of the vehicle.

Features

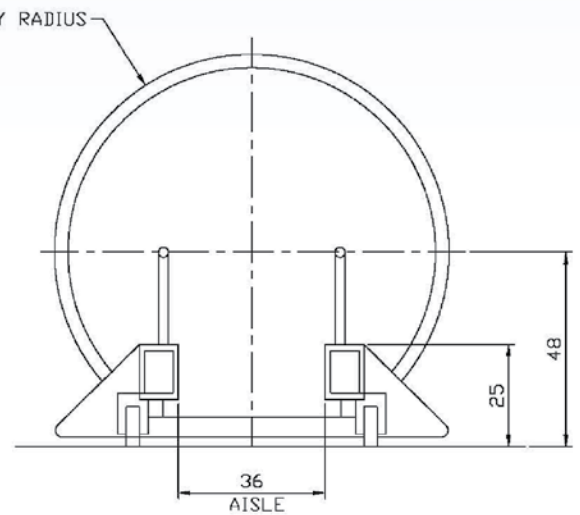
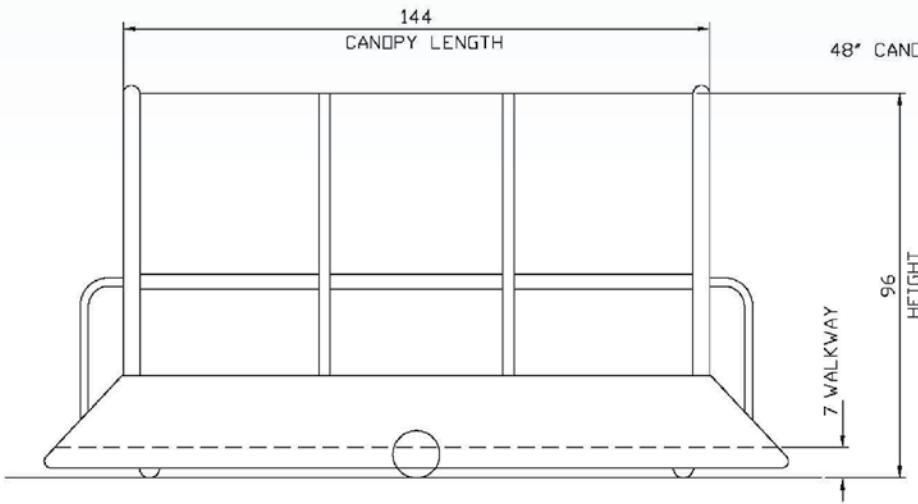
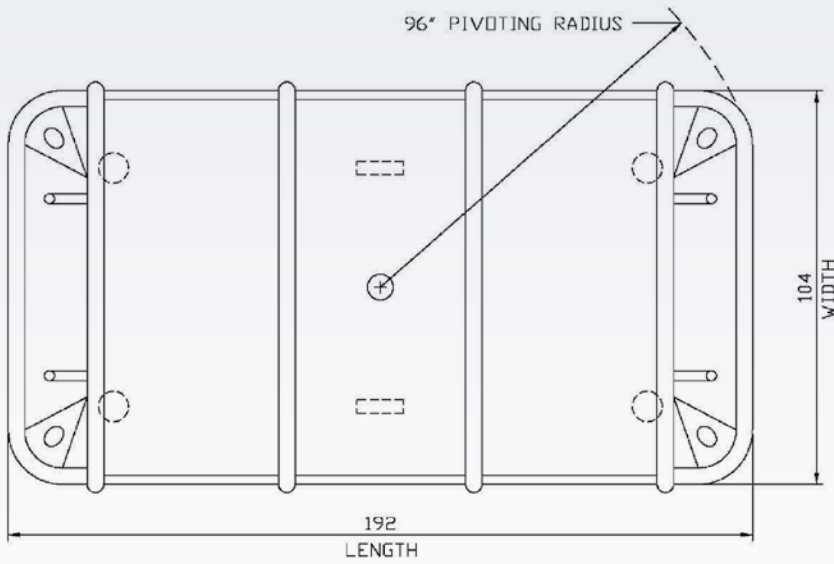
- ▶ Swing Open Covers Provide Access to All the Electrical and Drive Components.
- ▶ Clear See-Through Canopy Cover.
- ▶ Storage Compartments.
- ▶ Rubber Stop Bumpers all around the AGV Bottom will Stop the Vehicle When Depressed.
- ▶ Corecon's Modular Control System separates AGV Functions, making Problem Diagnosis Quicker, Reducing AGV Downtime
- ▶ AGV Safety Devices Meet and Exceed ANSI and OSHA Standards for AGVs.

Benefits

- ▶ Long Life Design (15+ Years of Life)
- ▶ Low Cost of Ownership
- ▶ Low Maintenance
- ▶ Access to All Major AGV Components
- ▶ Modular Design for Faster Diagnosis & Quick Repair
- ▶ Reduced Risk of Environmental Contamination since Hydraulic Systems are Eliminated
- ▶ Opportunity Charging System Eliminates Battery Handling
- ▶ Simple AGV Deployment

AGV Options

- ▶ Opportunity Charging
- ▶ Optical Communication
- ▶ Radio Communication
- ▶ Sealed Batteries
- ▶ Laser Safety Sensor
- ▶ Quick Charge Batteries



Performance

Speed Forward:	150 ft./Min.Max
Speed Reverse:	150 ft/Min
Acceleration & Deceleration:	0-150 ft Min = 3 Sec. in 5 ft.
Stopping and Repetitive Stopping Accuracy:	+/- 3/8 "
Minimum Cornering Radius:	48"
Load Capacity:	1,600 Lbs

Size / Weight

Overall Length:	192
Overall Width:	104"
Overall Height:	96"

