

Custom C520 Horizontal Roll Handling



Designed for efficient roll handling of loads up to 36 inches in diameter and weighing up to 3,000 lbs. The Custom C520 was originally designed for film roll handling in a dark-room/clean room environment. The custom roll handling attachment has a vertical lift stroke of 3 1/2" and cradle arms that shift horizontally 2 inches on each side in order to engage the core of the roll.

A bidirectional vehicle with two drive wheels, for differential type steering, and two swivel casters allow for a great deal of flexibility in movement and speed. The dual frame suspension keeps the drive wheels in contact with the floor at all times. All wheels feature extra thick polyurethane tread for long life and quiet operation. This bumper safety technology - along with additional safety sensors - comes standard on all our AGVs, ensuring a safe working environment for plant personnel.

Features

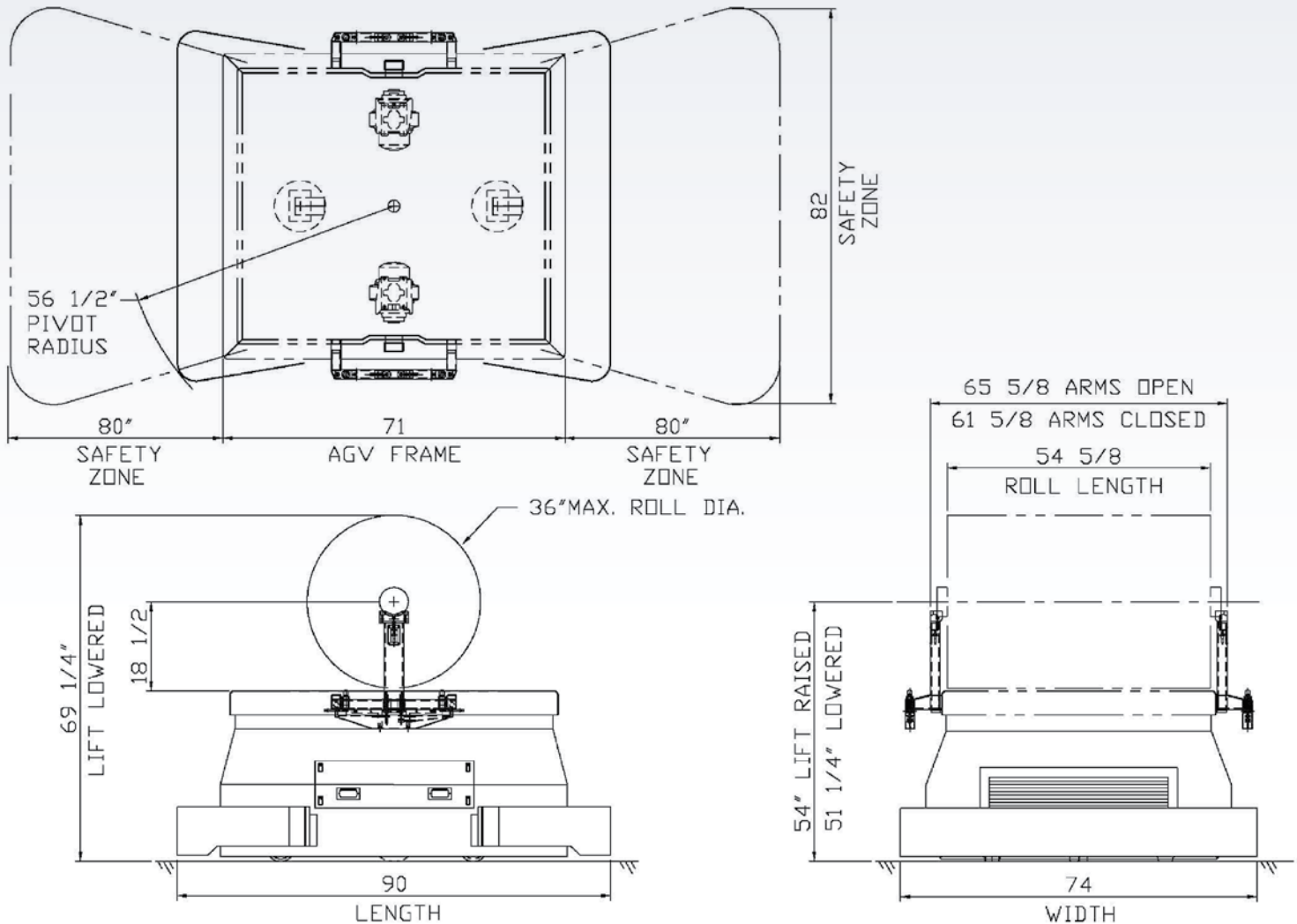
- ▶ The Pull out Cabinet Design Provides Access to All the Electrical Components.
- ▶ Retractable Lifting Arms are Provided to Make Lifting the Vehicle for Maintenance a Snap.
- ▶ Removable Battery Trays Allow Access to the Drive Units.
- ▶ Travel Drive Gearbox Gears are Hardened for Long Life.
- ▶ AGV Frame is of Welded Plate Construction.
- ▶ Corecon's Modular Control System separates AGV Functions, making Problem Diagnosis Quicker, Reducing AGV Downtime.
- ▶ AGV Safety Devices Meet and Exceed ANSI and OSHA Standards for AGVs.

Benefits

- ▶ Low Cost of Ownership
- ▶ Low Maintenance
- ▶ Access to All Major AGV Components
- ▶ Modular Design for Faster Diagnosis & Quick Repair
- ▶ Opportunity Charging System Eliminates Battery Handling
- ▶ Simple AGV Deployment
- ▶ Variety of Tooling Available for Many Custom AGV Applications

AGV Options

- ▶ Opportunity Charging
- ▶ Optical Communication
- ▶ Radio Communication
- ▶ Sealed Batteries
- ▶ Laser Safety Sensor



Performance

Speed Forward:	120 Ft./Min.Max
Speed Reverse:	120 ft/Min
Acceleration & Deceleration:	0-120 ft Min = 3 Sec. in 5 ft.
Rotate Vehicle 90 Degrees:	7 Secs
Stopping and Repetitive Stopping Accuracy:	+/- 3/8 "
Minimum Cornering Radius:	36"
Roller Deck Speed:	30 Ft/Sec
Load Capacity (standard):	3,000 Lbs. Max
Battery Capacity:	345 Amp/Hr.

Size / Weight

Overall Length:	90"
Overall Width:	74"
Overall Height:	49.3"

Lift & Cradle Arms

Center of Roll from floor (Low-ered):	51.3" Min
Center of Roll form floor (Raised):	54" Max
Lift Stroke:	3.5"
Lift High Speed:	40" Sec
Lift Low Speed:	20" Sec
Cradle Arm Travel per Side:	2" Sec
Cradle Arm Rate of Travel per Side:	"

