

## Eagle E225 Light Duty Counter Balance



The Eagle E225 is an automated counterbalance pallet truck. The Eagle E225 is capable of lifting loads up to 1,000 lbs with its standard Lift assembly. These automatic guided are ideal for those requiring an economical fork lift with low lifting heights, such as moving pallets from one place to another along the floor.

A bidirectional single drive unit allows for a great deal of flexibility in movement and speed. The single wheel suspension keeps the drive wheel in contact with the floor at all times. All wheels feature extra thick polyurethane tread for long life and noiseless operation. Electro-mechanical brakes are included as an integral part of the permanent magnet motor and sealed gearbox assembly. Each Eagle E225 is equipped with a 48-volt battery power source. Vehicle mounted slow-down sensors monitor obstructions while the vehicle is in motion.

### Features

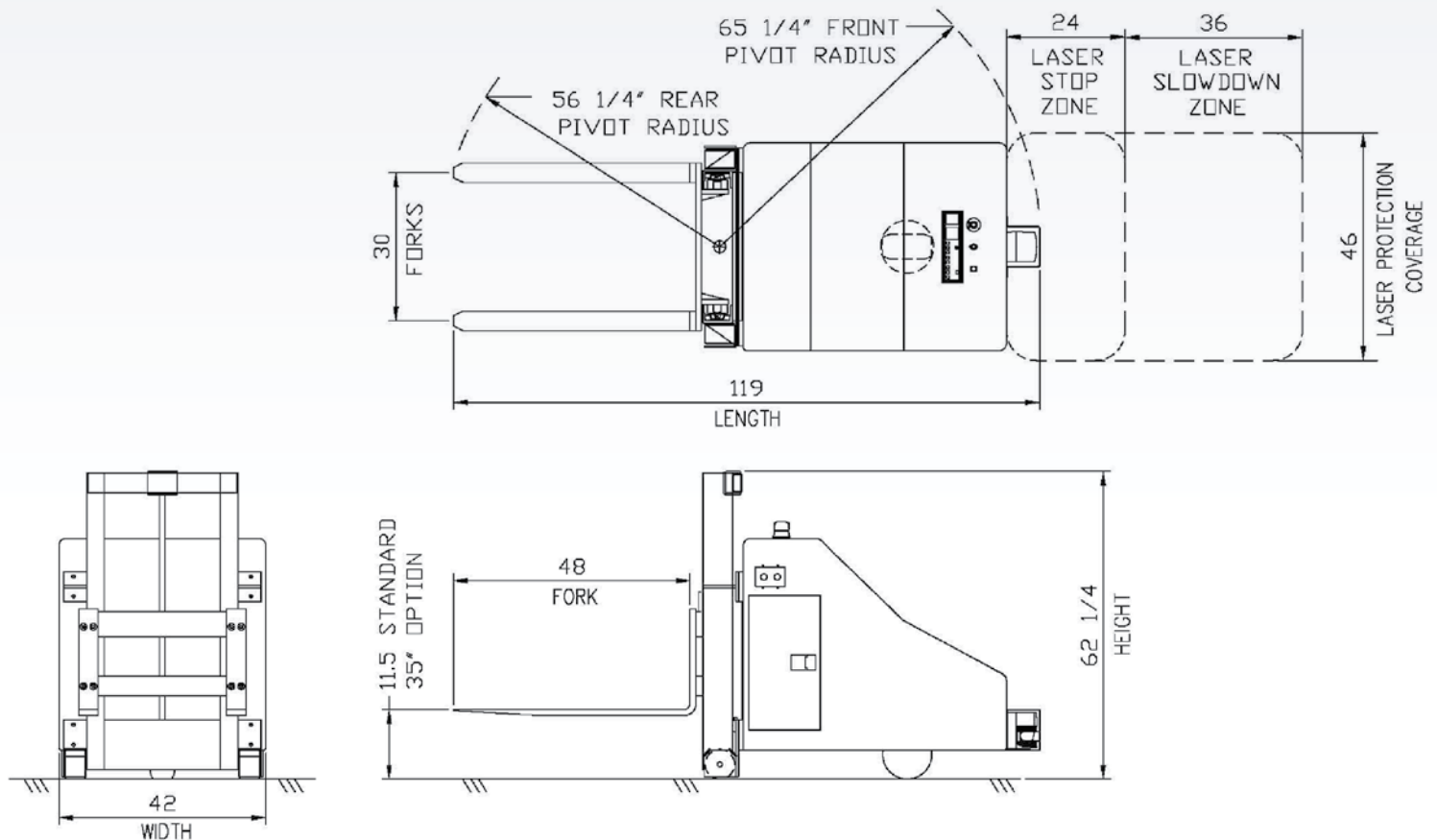
- ▶ Swing Open Covers Provide Access to the Drive Assembly and all Electrical Components.
- ▶ Drive Gearbox Gears are Hardened for Long Life.
- ▶ AGV Frame is of Welded Plate Construction.
- ▶ Corecon's Modular Control System separates AGV Functions making Problem Diagnosis Quicker Reducing AGV Downtime.
- ▶ Laser Bumpers reduce Mechanical Bumper Replacement Cost, Increase Safety, and can be Easily Programmed to Modify the Sensor Pattern for Each Application.
- ▶ AGV Safety Devices Meet and Exceed ANSI and OSHA Standards for AGVs.

### Benefits

- ▶ Low Cost of Ownership
- ▶ Low Maintenance
- ▶ Speedy & Easy Access to All Major AGV Components
- ▶ Modular Design for Faster Diagnosis & Quick Repair
- ▶ Simple AGV Deployment
- ▶ Variety of Tooling Available for Many Falcon AGV Applications

### AGV Options

- ▶ Laser Sensor for Obstacle Detection
- ▶ Optical Communication
- ▶ Radio Communication
- ▶ Sealed Batteries
- ▶ Opportunity Charging
- ▶ Quick Charge Batteries
- ▶ Optional Trailer Hitch with 7,500 lb Towing Capacity.



## Performance

Speed Forward:	230 ft./Min.Max
Speed Reverse:	115 ft./Min
Acceleration & Deceleration:	0-230 ft./Min = 3 Sec. in 5ft.
Stopping and Repetitive Stopping Accuracy:	+/- 1/2 "
Minimum Cornering Radius:	36"
Load Capacities:	1,000 Lbs.
Battery Capacity (Standard):	275 Amp/Hr.

## Size / Weight

Overall Length:	119"
Overall Width:	42"
Overall Height:	62.3

## Forks

Width:	4"
Length:	48"
Centers:	30"
Lift Height:	11.5"
Lift Height (Optional):	35"
Lift Accuracy:	+/- 1/8"

